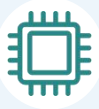


SPU-GE4200AWD-H

XPON ONU

4GE+CATV+2WIFI



High Speed CPU



Low Power Consumption



Optional Shell Supply



Software Customization

Brief Views

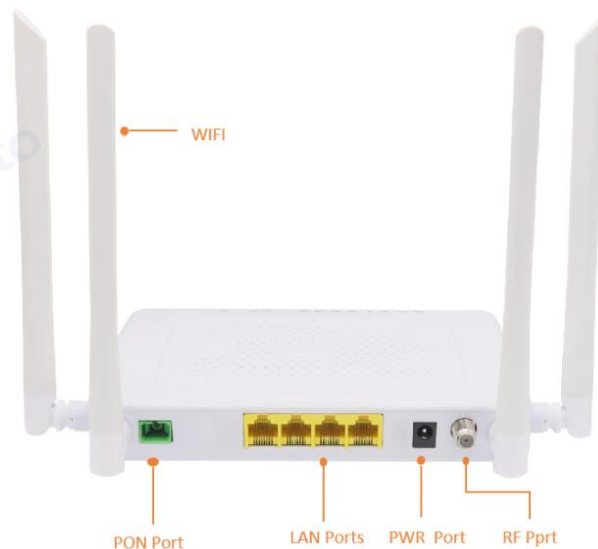
The SPU-GE4200AWD-H dual-mode ONU optical interface supports EPON and GPON access. The ONU automatically recognizes the central office OLT mode (GPON or EPON) and activates the corresponding PON mode, thereby completing GPON or EPON adaptive access.

SPU-GE4200AWD-H is a dual-mode ONU designed to meet the needs of radio and television operators for FTTH fiber-to-home multi-service reception. This product integrates Gigabit Ethernet through mature, stable and cost-effective Gigabit XPON technology Switching technology, WDM technology, HFC technology, have the characteristics of high bandwidth, high reliability, easy management and good quality of service (QoS) guarantee. The functions and performance indicators of the equipment meet ITU-T, IEEE related recommendations, relevant international standards and technical specifications of industry standards, and have good compatibility when used with mainstream manufacturers' central office OLTs.

Features

- Single-fiber access, provides internet, CATV, WIFI multiple service
- In compliant with ITU - T G. 984 and IEEE802.3ah standard
- Support ONU auto-discovery/Link detection/remote upgrade of software
- Support VLAN transparent, tag configuration
- Support multicast function
- Support DHCP/Static/PPPOE internet mode
- Support port-binding
- Support data encryption and decryption function
- Support Dynamic Bandwidth Allocation (DBA)
- Support MAC filter and URL access control
- Support remote CATV port management
- Support power-off alarm function ,easy for link problem detection
- Specialized design for system breakdown prevention to maintain stable system
- EMS network management based on SNMP ,convenient for maintenance

Product Interface and LED Definitions





Indicator		Description
WIFI	WIFI	Blinking: Data is being transmitted On: WIFI function Opens
LAN1-4	LAN port status	On: Ethernet connection is normal Blinking: Data is being transmitted through the Ethernet port Off: Ethernet connection is not set up
LOS	PON optical signals	On: Optical power lower than receiver sensitivity ; Off: Optical in normal
PON	ONU Register	On: Success to register to OLT Blinking: In process of registering to OLT Off: Failed to register to OLT;
CATV	CATV status	On: CATV optical normal Off: The CATV signals are not received
PWR	Power status	On: The ONU is power on Off: The ONU is Power off
OPT	Light intensity indicator	On: higher than ONURX maximum threshold; flashing: lower than ONU RX minimum threshold; off: ONU RX is within the normal threshold range.
INT	Internet status indicator	On: The routed WAN Internet access service is normal.

Off: The routed WAN Internet access service is abnormal.

Hardware

GPON/EPON Port

- Single mode single fiber
- GPON: FSAN G.984.2 standard
- EPON: 1000BASE-PX20+ symmetric
- GPON: 2.488Gbps/1.244Gbps downstream/upstream
- EPON: 1.25Gbps downstream/upstream
- Wavelength : Transmit: 1310nm Receiver: 1490nm
- Receiving sensitivity : GPON: -28dBm EPON: -27dBm
- Saturated power : GPON: -8dBm EPON: -3dBm
- Transmitting power : GPON: 0.5 ~ 5dBm EPON:0 ~ 4dBm

User Port(LAN)

- RJ-45 connector
- 4*10/100/1000 Mbps adaptive Ethernet port
- Full/half duplex
- Auto MDI/MDI-X

WIFI performance parameters

- IEEE802.11b/g/n(2.4G)
- IEEE802.11a/b/g/n/ac(5G)
- Max rate: 300M(2.4G)
- Max rate: 867Mbps(5G)
- Antenna gain: 5dBi

Dimension and Weight

- Item Dimension:
- 160mm(L) x 139.5mm(W) x 28.5mm (H)

- Item weight: 0.231kg

CATV (Input /Output port)

- Wavelength: 1550nm
- Input optical power: -18dBm ~ 0dBm(with AGC)
- RF frequency: 47MHz~1000MHz
- RF output level: 78dBuV (@-12~-2dBm@85MHz) (with AGC)
- RF output return loss: >12dB(with AGC)
- RF impedance: 75Ω

Environmental Specifications

- Operating temperature: 0 to 40°C
- Storage temperature: -40 to 85°C
- Operating humidity: 10% to 90%(Non-condensing)

Software

Management

- EPON :OAM / WEB / TR069 / Telnet
- GPON:OMCI / WEB / TR069 / Telnet

L3

- IPv4/IPv6 Dual Stack
- NAT
- DHCP client/server
- PPPOE client/ Pass through
- Static and dynamic routing

Switch

- MAC address learning
- MAC address learning account limit
- Port flow control
- Broadcast storm suppression
- VLAN transparent/tag

- Port-binding

Multicast

- IGMP V2
- IGMP VLAN
- IGMP transparent/Snooping/Proxy

Wireless

- 2.4G: 4*SSID
- 2*2 MIMO
- Choose channel automatically

Security

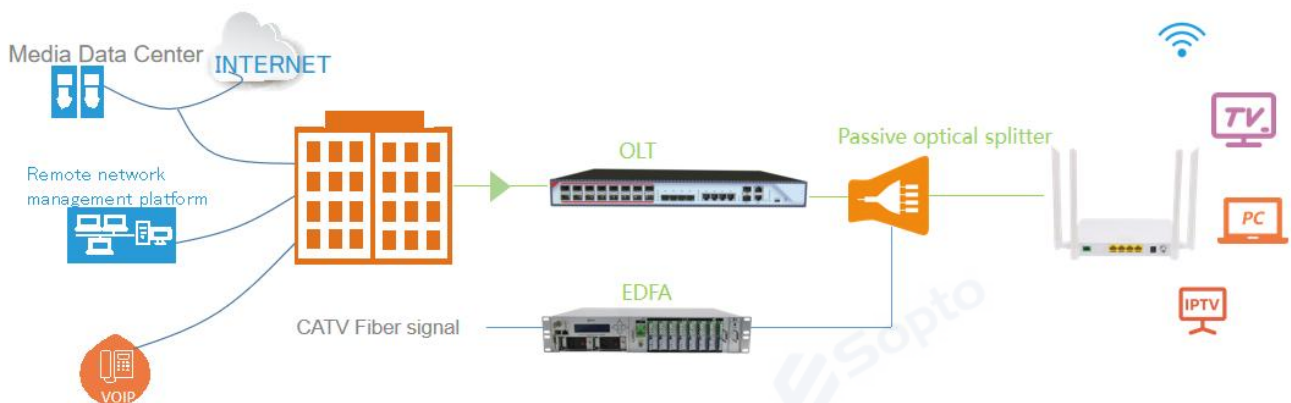
- Firewall
- MAC address/URL filter
- Remote WEB/Telnet access control

Register

- Auto-discovery/Link detection/Remote upgrade software
- Auto/MAC/SN/LOID+Password authentication

Network Application

- Typical Solution: FTTH
- Typical Business: Internet, CATV, Wi-Fi



Ordering Information

Product Model	Descriptions
SPU-GE4200AWD-H	G/EPON ONU 4*10/100/1000M Ethernet interface, with CATV support 2.4GHz and 5GHz WIFI 802.11ac , with AGC

If you need more customized services, please contact us.

E-mail: info@sopto.com.cn

Web : <http://www.sopto.com.cn>